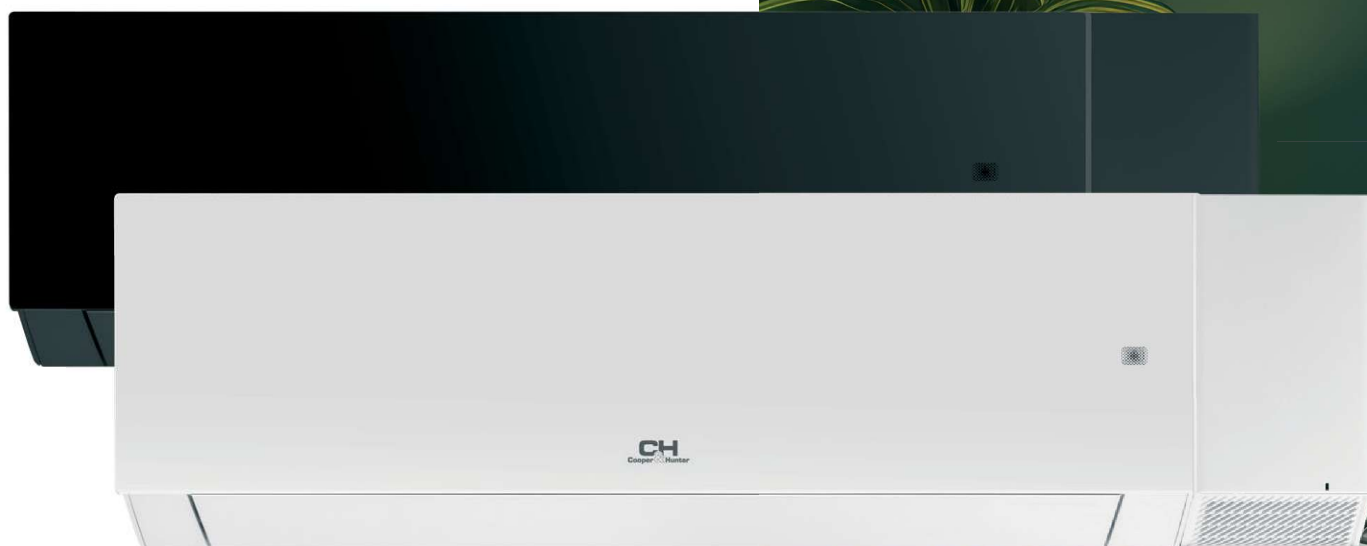


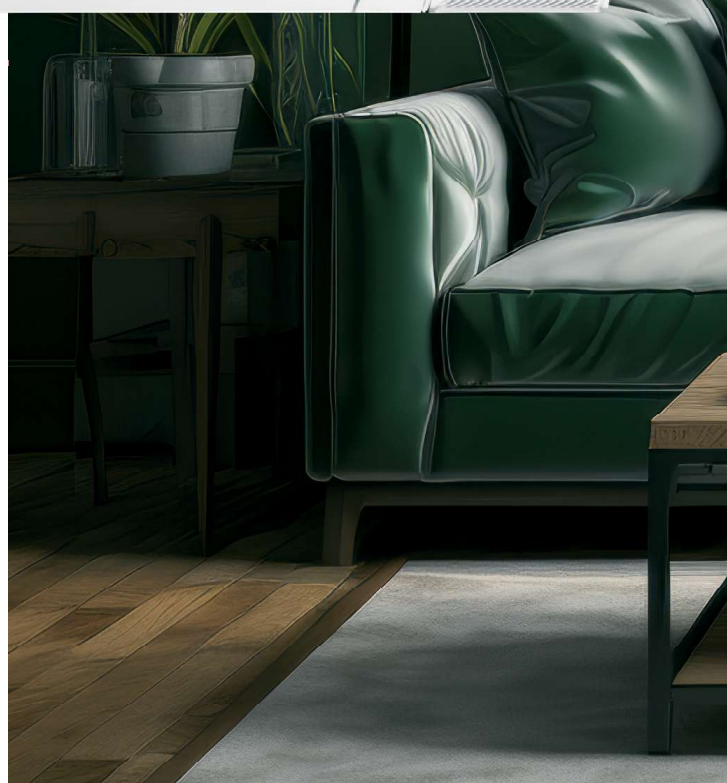


Gen  
VI



# NATURE

## SERIES



# Technology from the future at your house

During creation of home design the most important thing is functionality & style. Nature Series are inspired not only by the product design.

Basically, Nature Series are stands for innovations due to unique technologies you are able to control indoor temperature/humidity but the most thing about **Nature is fresh air supply** via Nature heat pump. Fresh air comes from special device accessory. As a result, your home environment is completed by fresh clean air from outside without any sound distractions, dust and draughts.

In-built **CH-AI technology** provides deep analysis and research of parameters & adjustments to get the most effective and safe-cost productivity.

Additionally Nature heat pump providing the precise neutralizing of bacteria & germs due to **CH-UV Cleaner** function.



# FRESH AIR KIT

UNIT



Compare to standard fresh air supply Fresh Air Kit unit providing heat/cooling recovery and saves energy costs during heating/cooling operation. The unit is separately connected and can operate autonomously. If you are looking for innovative fresh air recovery solution, Fresh Air Kit by Nature heat pump is made for you.

## CH-HRV030S\* Fresh Air Kit unit with heat exchanger

This fresh air module is available as an option for Cooper&Hunter's NATURE series air conditioners and allows you to utilize the thermal energy of the exhaust air using a unique heat recovery system. The module is easy to clean, and the electrical connection between the module with the indoor unit panel can be made in one simple step. Fresh and exhaust air is sucked in and filtered through a HEPA filter to ensure clean air in your your home. The filter is replaceable and easy to clean.

**Pre-cooling of hot outdoor air before it is delivered to reduce indoor cooling losses.**



Cooling test conditions  
 $\Delta T = 8^{\circ}\text{C}$

**Preheating of cold outside air before it is delivered to reduce heat loss in the room.**



Heating test conditions  
 $\Delta T = 25^{\circ}\text{C}$

	Exhaust air intake		Fresh air intake	
	Dry-bulb temp, °C	Wet-bulb temp, °C	Dry-bulb temp, °C	Wet-bulb temp, °C
Heat exchange (cooling) efficiency	27	19.2	35	28
Heat exchange (heating) efficiency	21	13	5	2

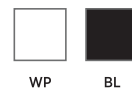
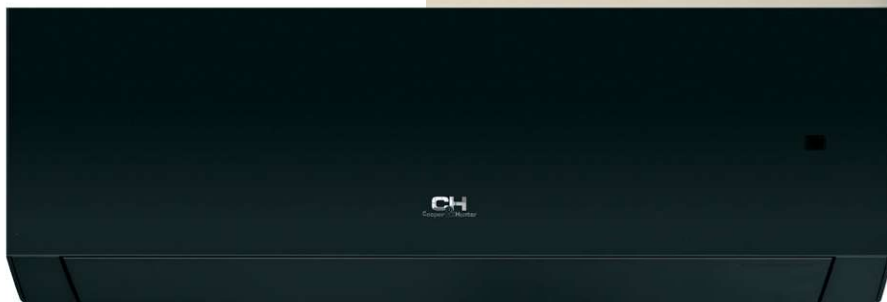
CH-HRV030S-*		
Rated voltage	V	12±0.5
Power	W	13
Sound pressure max	dB (A)	42
Weight	kg	1.8

	A (mm)	B (mm)	C (mm)	D (mm)	E (mm)	F (mm)	G (mm)
CH-HRV030S-*	187	79	141	49	151	293	200

\* Unit can be dispatched in two various colours: white matt (WP)/black matt (BL)

# NATURE

## Series



### Accessories (optional)



Wired controller  
CE50-24/E



Wired controller  
XK76



Wired controller  
CE52-24/F



Fresh Air Kit  
CH-HRV030S-\*

### Health Features



ECO Fresh  
technology



CH Smart Ion  
technology



X-Fan function



CH-UV  
technology



Double Self-  
Clean technology



FRESH AIR KIT  
(option)

### Comfort Features



Cooling  
Mode



Heating  
Mode



Ventilation  
Mode



Dry  
Mode



Humidity  
Control



Dry Clothes  
Function



I-Feel



Turbo Mode



Hot Start



Vertical  
SWING



Horizontal  
SWING



+8°C Mode



Sleep  
Mode



Quiet  
Mode

### Control Features



Wi-Fi



Remote  
Control



Locking Remote  
Control



Daily  
timer



Connection to  
wired controller



Connection to  
BMS

### Intelligent Features



CH-AI  
technology



I Action  
technology



Auto Restart



Self  
monitoring



Auto Defrost



Auto Light

### Technology Features



R32  
Refrigerant



Inverter



Blue Fin  
Coating



LED display



Energy efficient  
copper tubes



Multi-speed  
fan



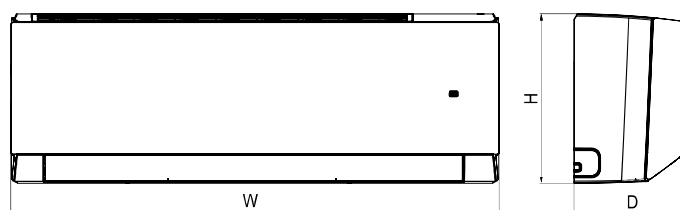
Crankcase  
heating system



System			CH-S09FTXAN-***	CH-S12FTXAN- ***	CH-S18FTXAN- ***	CH-S24FTXAN- ***
Capacity	Cooling	kW	2.7	3.51	5.3	7.1
	Heating	kW	3.0	3.81	5.6	7.3
Rated power	Cooling	kW	0.68	0.836	1.472	2.03
	Heating	kW	0.67	0.929	1.365	1.87
Energy efficiency	Cooling (SEER*)	kW/kW	8.5/A+++	7.2/A++	7.3/A++	7.0/A++
	Heating (SCOP**)	kW/kW	5.7/A+++	5.2/A+++	5.7/A+++	5.5/A+++

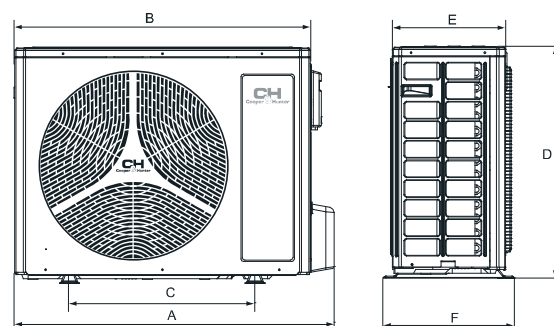
Indoor Unit			CH-S09FTXAN-***	CH-S12FTXAN- ***	CH-S18FTXAN- ***	CH-S24FTXAN- ***
Air flow rate	m³/h		610/570/540/470/ 440/420/390/180	720/600/570/530/ 500/460/430/320	1000/880/760/650/ 620/600/550/260	1000/850/760/580/ 520/450/400/280
Sound level pressure	dB (A)		38/37/34/31/26/23/22/19	45/42/40/37/34/29/26/23	45/42/40/37/34/29/26/23	48/44/41/40/38/36/33/27
Druing	l/h		0.8	1.4	1.8	2.4
Weight	kg		9.5	9.5	13.0	13.0

	W (mm)	H (mm)	D (mm)
CH-S09FTXAN-***	837	293	200
CH-S12FTXAN-***	837	293	200
CH-S18FTXAN-***	993	311	222
CH-S24FTXAN-***	993	311	222



Outdoor Unit			CH-S09FTXAN-***	CH-S12FTXAN- ***	CH-S18FTXAN- ***	CH-S24FTXAN- ***
Sound level Pressure	dB (A)		50	56	59	59
Power supply			-220-240 V/50 Hz/1 Ph			
Compressor type			Rotary			
Тип холодоагента			R32			
Temperature range (cooling)	°C		-15-50			
Temperature range (heating)	°C		-25-30			
Weight	kg		25.0	35.0	37.0	45.0
Distance between fixings	mm		455	528	528	570
Refrigerant charge	kg		0.53	0.57	0.85	1.4
Liquid pipe diameter	mm/inch		6.35 / 1/4"	6.35 / 1/4"	6.35 / 1/4"	6.35 / 1/4"
Gas pipe diameter	mm/inch		9.53 / 3/8"	9.53 / 3/8"	12.7 / 1/2"	15.88 / 5/8"
Max pipeline level difference	m		10	10	10	10
Pipeline max length	m		15	20	25	25

	A (mm)	B (mm)	C (mm)	D (mm)	E (mm)	F (mm)
CH-S09FTXAN-***	732	675	455	555	285	330
CH-S12FTXAN-***	873	805	528	561	316	376
CH-S18FTXAN-***	873	805	528	561	316	376
CH-S24FTXAN-***	958	889	570	660	340	402



\*Seer - Seasonal capacity factor of the system in cooling mode

\*\* SCOP - Seasonal capacity factor of the system in heating mode

\*\*\* Unit can be dispatched in two various colours: white matt (WP)/black matt (BL)