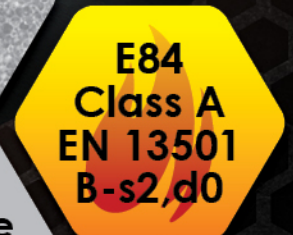
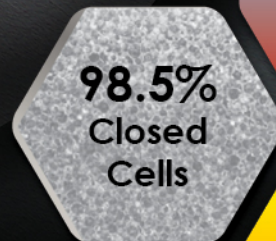
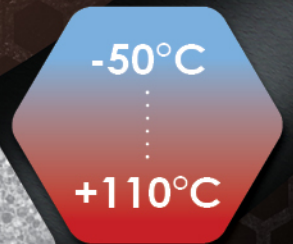


ISOPIPE[®]



Flexible Elastomeric Foam Insulation (FEF)

Conserving energy for a better planet



Integrated Insulation Systems

www.isopipe.eu

ISOPIPE TC provides long-term and reliable thermal insulation

98.5%
Closed
Cells

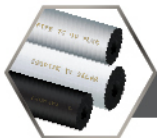
Nitrile
Butadiene
Rubber
NBR

Description & Benefits

ISOPIPE TC - is an **NBR** based flexible elastomeric foam insulation with significantly high percentage, **98.5%**, of **closed - cells**.

- ✓ Thanks to its closed cell structure, **ISOPIPE TC** has **excellent insulation properties**.
- ✓ **ISOPIPE TC** has **outstanding thermal performance** and **condensation resistance** due to the high percentage, 98.5%, of closed cells.
- ✓ **ISOPIPE TC** insulation systems are manufactured with all due **respect** for the **human health** and the **environment**.
- ✓ **ISOPIPE TC** is **certified** for Anti-Microbial and Fungal Protection according to ASTM E2180 and ASTM G21.
- ✓ As an NBR based product, **ISOPIPE TC** insulation, provides great **oil** and **grease resistance**.
- ✓ **ISOPIPE TC** is offered in a wide range of sizes and forms, making its application easier.
- ✓ **Short lead time** due to our **high flexibility of production**.
- ✓ The outstanding performance of **ISOPIPE TC** material is guaranteed through **continuous supervision** and **factory tests**.

Product Range



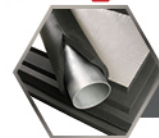
Pipes

- Available in thickness of: 6, 9, 13, 19, 25, 32, 40, 50 mm and pipe diameters up to 139 mm.
- Pipe's standard length is 2 meters and 1 meter.
- Available in: **ISOPIPE TC, ISOPIPE COVERINGS: SOLAR, SOLAR SG, HP, UV PLUS & HEAVY DUTY (HD)**



Rolls

- Available in thickness of: 6, 10, 13, 19, 25, 32, 40, 50 mm.
- Available in width of 1.00 m and length up to 30 meters.
- Available in: **ISOROLLS TC, ISOROLLS COVERINGS: SOLAR, HP, UV PLUS & HEAVY DUTY (HD) (with or without self-adhesive)**
- **ISOROLLS** are also available in the form of Sheets. The dimensions of **ISOSHEETS** are 1 x 1 in width of 1.20 m or/ and 1.50 m upon request.



System

- A custom-width sheet to accurately cover large pipes of any diameter, **cut in angle** to ensure proper fit and better edge bonding.
- Available in thickness of: 13, 19, 25, 32, 40 mm and pipe diameter from 114 mm up to the desired diameter.
- Packaged in 1 meter length.
- Available in: **ISOSYSTEM TC, ISOSYSTEM COVERINGS: SOLAR, HP & UV PLUS**



Slit & Seal

- **Pre slit pipe with self-adhesive tape and self-adhesive overlap.** Significantly reduces application and installation time and labor costs. Perfect for already existing pipe systems.
- Available in pipe form with thickness of: 9, 13, 19, 25, 32, 40 mm and pipe diameters up to 114 mm.
- Pipe's standard length is 2 meters and 1 meter.
- Available in: **ISOPIPE TC, ISOPIPE COVERINGS: SOLAR, HP & UV PLUS**



Coil

- It is highly practical for installers and technicians. No scraps; cut only the necessary length and store the rest. Less use of glue and less hassle.
- Available in thickness of: 6, 9, 13 mm and pipe diameter up to 28 mm, coiled in continued lengths of up to 76 meters.
- Available in two size boxes at the same price. Ruler on each box.
- Available in: **ISOCOIL TC**

For more information please refer to **ISOPIPE COVERINGS: SOLAR, UV PLUS, HP & HEAVY DUTY Brochure**.

Product Characteristics

Material: Closed - cell synthetic rubber elastomeric foam.

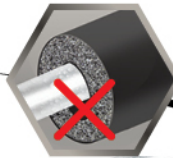
Temperature Range
Extensive range (-50°C to +110°C) allowing brief peaks above limits.



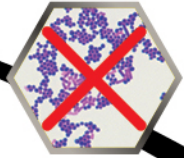
Fire Performance
Ideal for residential and public buildings as it will not spread flames or drip flaming particles (E84 Class A, EN 13501, B - s2, d0).



Proper Fit
With exemplary tolerances, secures proper fit ensuring more savings for refrigeration, cooling and heating.



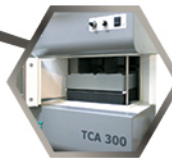
Antimicrobial Protection
An advanced composition preventing the development of bacteria and fungi (ASTM E 2180 and ASTM G21 certification).



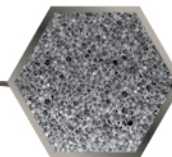
Permeability
Very high resistance to water vapour transmission, ensuring long - term performance and effectiveness of the insulation. ($\mu \geq 10000$)



Thermal Conductivity
Superior quality closed-cell elastomeric material, designed to reduce thermal losses.
 $\lambda = 0.031\text{W/mK}$ at -20°C
 $\lambda = 0.033\text{W/mK}$ at 0°C
 $\lambda = 0.035\text{W/mK}$ at +20°C
 $\lambda = 0.036\text{W/mK}$ at +30°C



Density
Produced with optimum density for effective reduction of thermal losses
60 kgr/m³, ± 10 kgr/m³



Flexibility
Exceptional elasticity and endurance for time-saving applications and effective insulation.



A wide range of Applications



Heating



Plumbing



Air Conditioning



Refrigeration



Solar Energy

New User Friendly App for Tablet & Mobile Devices

ISOPIPE Insulation Calculator has been developed to offer exact measurements for Certified Insulation, NBR and EPDM based.

Through the Program's Calculations the user receives many recommendations, but also the techno-economic choice towards energy savings.

ISOPIPE Insulation Calculator Highlights:

- ✓ The app **works Offline**, online use while sending the PDF file
- ✓ **Save** the **Calculation** inside the Program
- ✓ More than **2000** Calculations can be Saved and seen any time
- ✓ **Send** the Calculation in any **Email** address in PDF form
- ✓ **Send** Multiple Saved Calculations in a **Single PDF** file
- ✓ **Translated** in **8 languages**
- ✓ **Download** it for **free** in *Apple Store* & *Google Play Store*

ISOPIPE® Insulation Calculator



Company's Profile

ISOPIPE S.A. is a leader in the field of insulation and heating. Its industrial unit is one of three worldwide specializing in vertical production of elastomeric insulation.

ISOPIPE S.A. was founded in 1997. In 2008 the company completed a large investment by obtaining the know-how of TORRENT, the Greek market leader in cast iron boilers. In 2009, the company expanded with the establishment of its subsidiary Iberica sl in Barcelona, Spain.

ISOPIPE S.A. factory is located 73km north of Athens, with a covered area of 60,000 m² and buildings of 30,000 m².

Our quality system is EN ISO 9001:2015 certified, while our production program, as well as the quality and properties of all our ISOPIPE products, are based on EN 14304.

Please, watch our video for more information.



ISOPIPE® S.A.

Rebuild the future!

www.isopipe.eu

GREECE

Head Office:

Nafpliou & Daskalogianni
144 52 Metamorfofi Attikis
T.: +30 210 28 28 603
F.: +30 210 28 19 210
E.: export@isopipe.gr

Plant:

73rd km Nat. Road Athens - Lamia
341 00 Ritsona Halkida
T.: +30 22620 89 800
F.: +30 22620 72 006
E.: export@isopipe.gr

SPAIN

Barcelona:

C/ Costa i Deu 71 - 79 (esq. C/ Tamarit)
08205, Sabadell, Barcelona, España

Madrid:

Calle Pedro Duque, 5,
Polígono Industrial GITESA,
28.814- Daganzo de Arriba (Madrid),
Madrid Community

T.: +34 93 879 1195
F.: +34 93 879 1313
E.: pedidos@isopipe.es

UNITED KINGDOM

Head Office:

178 Seven Sisters Road
London N7 7PX
United Kingdom

Warehouse:

Airfield Industrial Estate Warboys, Huntingdon
Cambridgeshire PE28 2SH
United Kingdom

T.: +44 (0) 208 299 9545
E.: orders@isopipe.eu